

Looking back to look ahead

A decade of reducing restrictive interventions in Victoria .

Anna Love
Chief Mental Health Nurse
Office of the Chief Mental Health Nurse , DHHS Vic

Background: the last 10 years



Background: the last 10 years

Framework for recovery oriented practice (2011)

Chief Psychiatrist Advisory Notice: Practice of prone restraint (2013)

Victorian
Reducing
Restrictive
Interventions
Project
(2013-2014)

- Statewide project team
- Establish evidence base
- Best practice framework
- Local Actions Plans
- Trauma Informed Care & Sensory Modulation Training
- Safewards Pilot Project

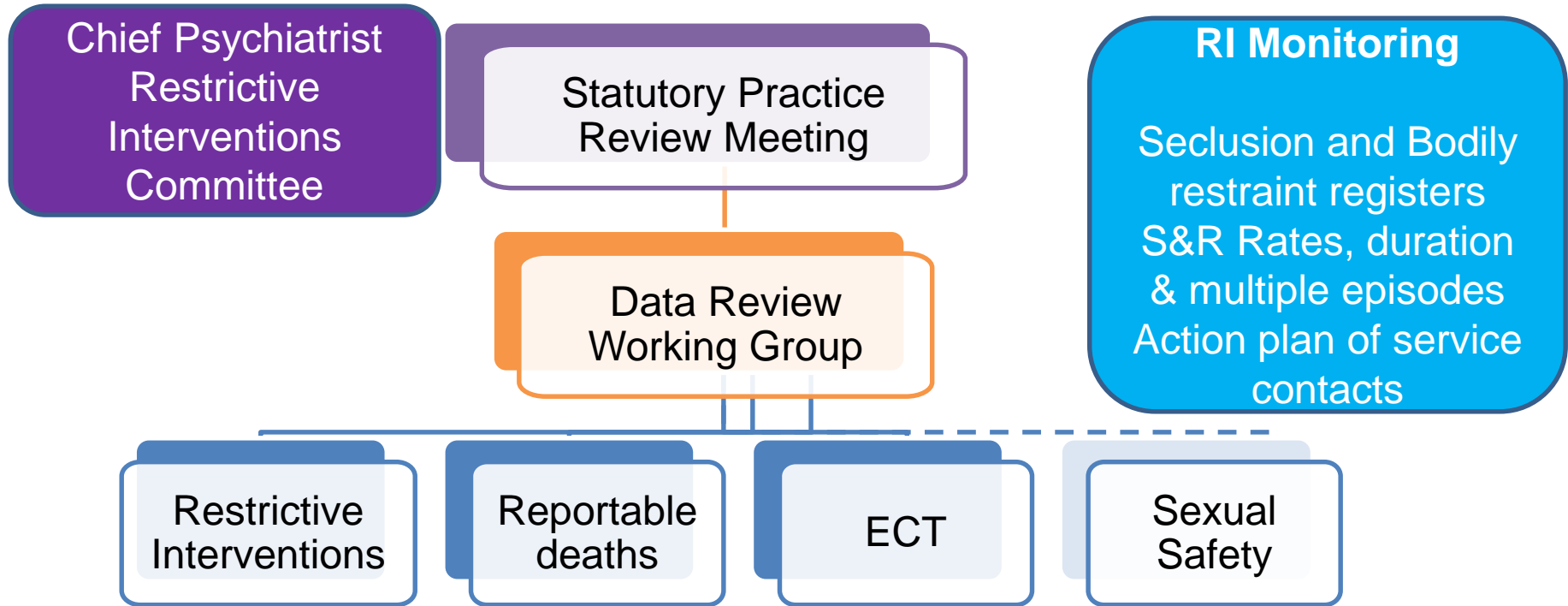
Mental Health Act 2014

Variance Reporting Pilot

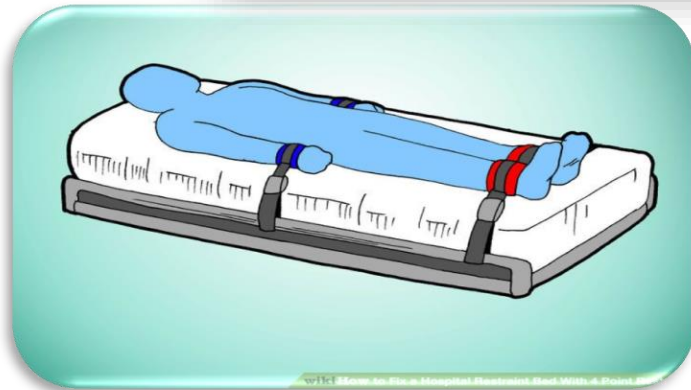
OCP & OCMHN structural reform



Victorian OCP Governance Structure for restrictive intervention monitoring and review



Identification of clinical practice issues



Looking Ahead



Mental Health Intensive Care



MHIC Framework:
clinical practice
domains &
principles

Recovery
oriented

Trauma
informed

Human
rights

Supported
decision
making

Family
Inclusive

Responding to
diversity

Least
restrictive

Six Core Strategies



- Greater reference to Six Core Strategies
- OCP/ OCMHN
- Service

Key Messages

A culture of coercive practices includes more than seclusion and restraint-
change to recovery focus and supported decision making

Strengthen clinical governance and organisational leadership- promotion
of the Six Core Strategies

Clinical aggression and violence needs to be given equal focus and
balance along with reducing restrictive interventions

Our intentional direction for reducing restrictive interventions needs to sit
within a discussion about our **models of care** and weaving the principles
of our Mental Health Act through education and policy across the state.

Key Messages

Co production and Co design - This has to be a priority of our offices but also supporting the sector to follow. The Three C's , Consumer , Clinicians and Carers need to be in all discussions.

Review of KPI's – Use of data

Strategic Plan through the Chief Psychiatrist Committee for Reducing Restrictive Practices.

Key Messages

Mental Health Intensive Care –A culture shift , moving from a space to a type of care

Sharing of Ideas –Finding more ways to share our ideas , publications , forums etc.



Health
and Human
Services